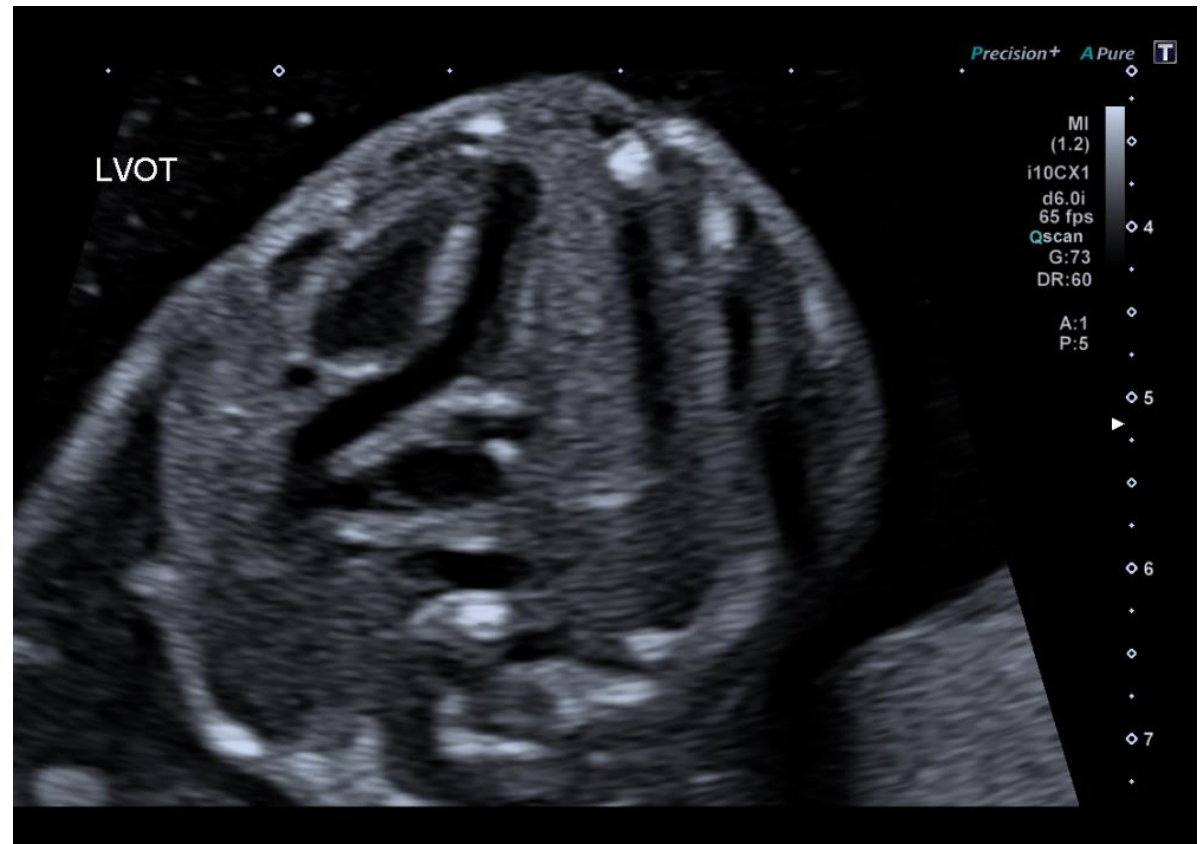
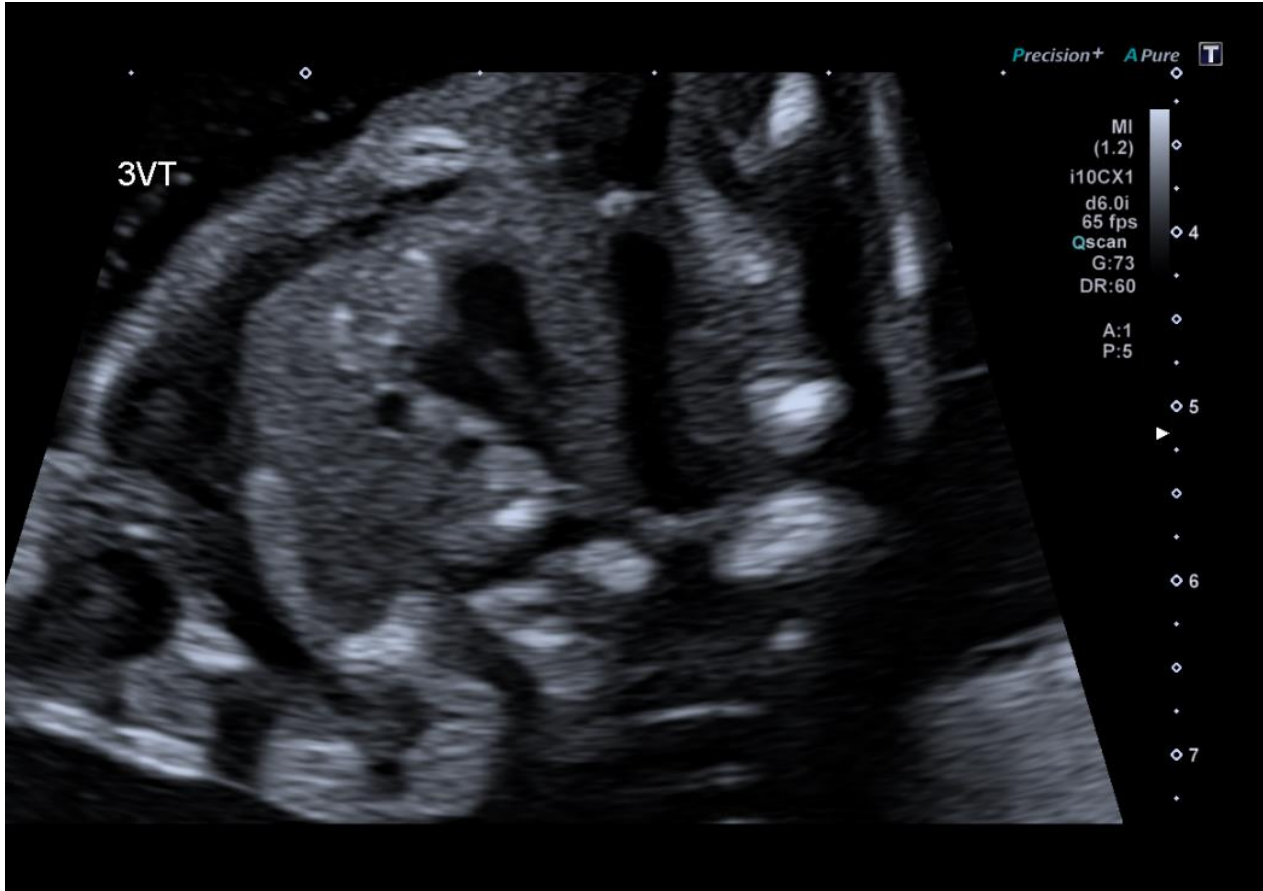


Obstetric Case 7

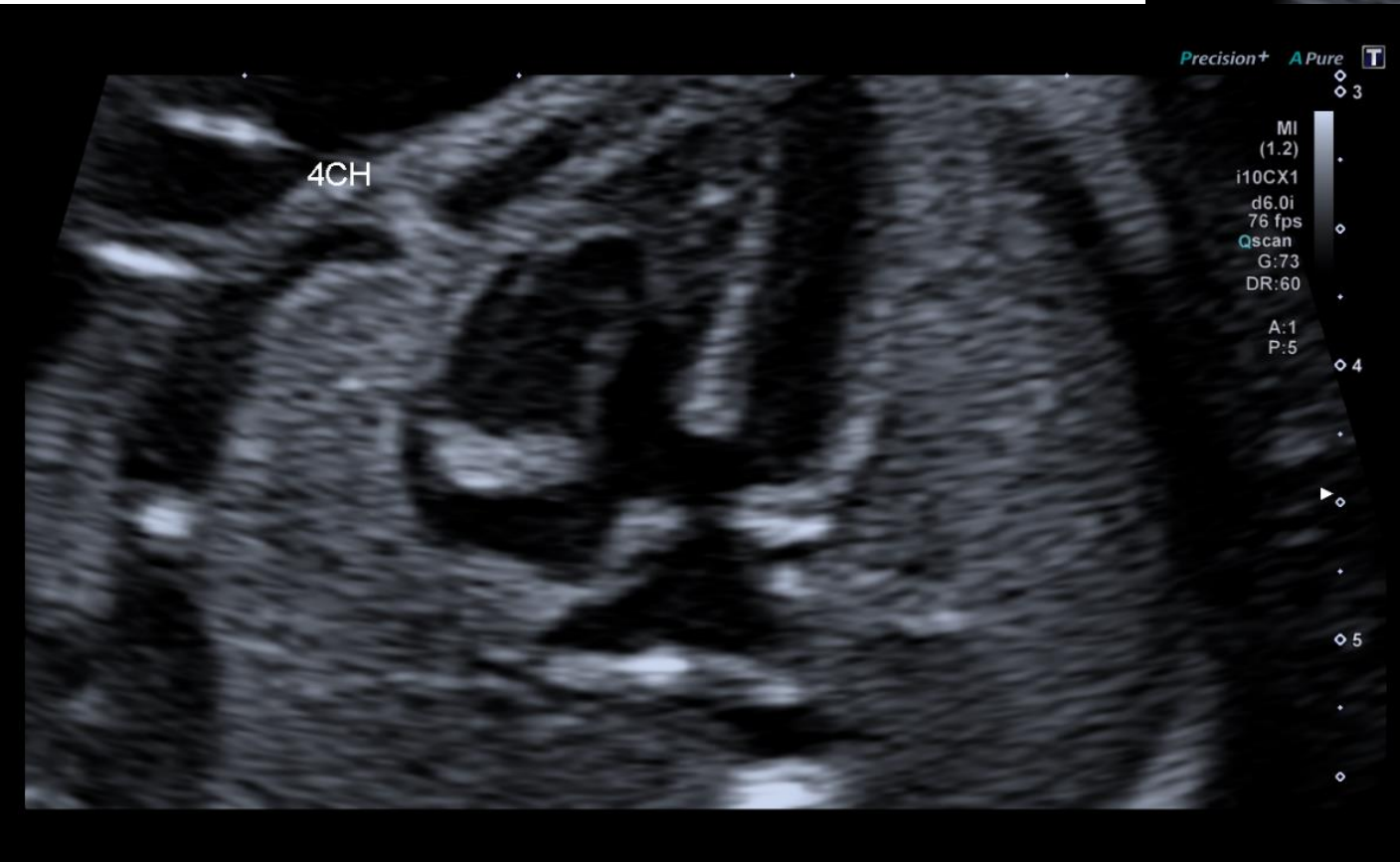
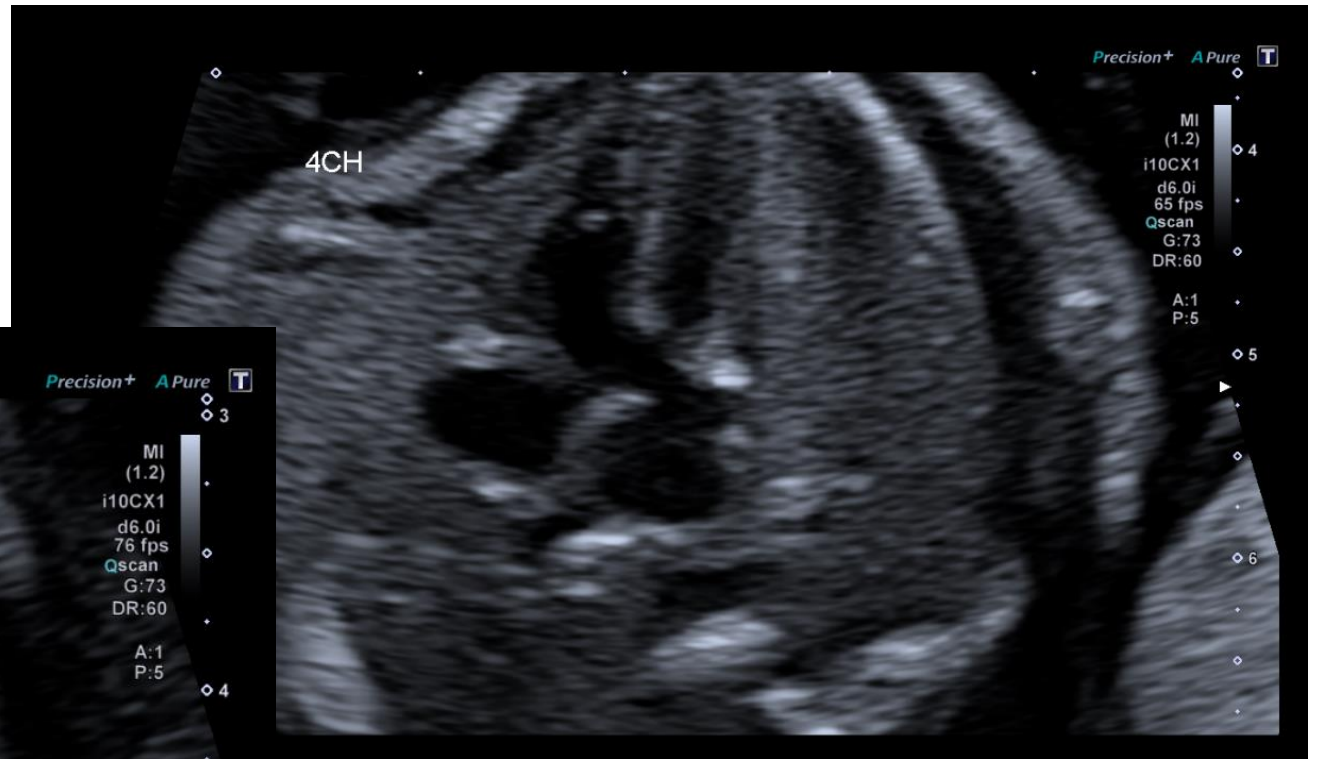
February 2023

31 y/o female.

G3P1. H/O termination of pregnancy for serious skeletal dysplasia. Currently 20 weeks. Anomaly scan.







Consider the following questions:

1. What abnormality is present in the fetus?
2. What other testing would be recommended for this patient?

Do not progress to next slide until you have attempted to answer the previous questions.

Question 1

Atrioventricular septal defect
(AVSD)

Question 2

Chromosomal testing due to high
association with chromosomal
abnormalities

AVSD Fact File

Two types:

Complete - large hole in the middle of the heart allowing blood to flow freely between all four chambers. Also, instead of two separate valves, there is one common atrioventricular valve. Occurs frequently in babies with T21.

Incomplete (or partial) - The heart has some, but not all of the defects of a complete AVSD. There is usually a hole in either the atrial or ventricular wall near the centre of the heart. Both the mitral and tricuspid valves are generally present, but one of the valves (usually mitral) may not close completely, thus allowing blood to leak backward from the left ventricle into the left atrium.

Most AVSDs require surgery.